



## SPECIFICATIONS

**RATING:** 50mA, 12V DC

**CONTACT RESISTANCE:** 100 mΩ MAX.

**INSULATION RESISTANCE:** 100 MΩ MIN.

**MECHANICAL LIFE:** 300,000 cycles.

**OPERATING FORCE:** 160±50g

**STROKE:** 0.25±0.10mm

**OPERATING TEMPERATURE RANGE :** -20°C to 70°C

## MATERIALS

**BASE:** High Temp Thermoplastic PA66, Black.

**CAP:** High Temp Thermoplastic PA66, White.

**CAP LOCK:** High Temp Thermoplastic PC, White.

**STEM:** High Temp Thermoplastic PBT.

**CONTACT :** Stainless Steel SUS301, With silver cladding

**TERMINALS :** Brass, With silver plating.

## HOW TO ORDER

**PROD. NO. : M**  **6 - H**  **T 2**  **Q A**

=Without LED  
L=TACT Switch +LED

Solder Type:  
H= Through hole

0=Without Cap  
2= Cap Type : Round

Cap Finish  
See Note

Operation Force:  
2 = 160gf

=Without LED  
LED Color  
B=Blue Y=Yellow G=Green R=Red

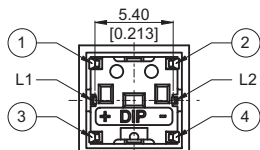
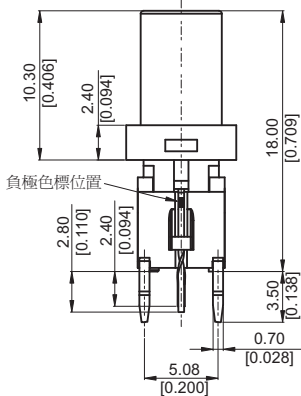
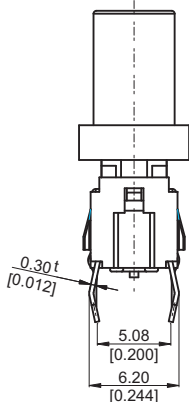
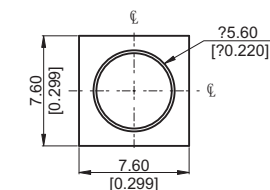
Q=Halogen Free

Package:  
A= TRAY

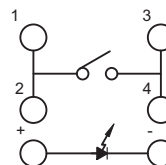


## DIMENSION

### ML6-H2T2BQA



## CIRCUIT



## P.C.B LAYOUT

