



SPECIFICATION:

MAX. CURRENT/VOLTAGE RATING WITH RESISTIVE LOAD:

PA S6/S7	400mA 32VAC-100mA 50VDC-125mA 125VAC 500mA 48VAC - 200 mA 50VDC - 200mA 250VAC.for metal material.
PA L6	100mA 24VDC-life expectancy 200,000 cycles 2A 125VAC-life expectancy 10,000 cycles

INITIAL CONTACT RESISTANCE: 50mΩ max.

INSULATION RESISTANCE: 1GΩ min.at 500VDC.

DIELECTRIC STRENGTH: 1,000 VAC rms.
1,500 VAC rms. for metal material.

ELECTRICAL LIFE AT FULL LOAD:

PA S6/S7	500,000 cycles.
PA L6	200,000 cycles.

OPERATING TEMPERATURE: -30°C to 85°C.

PANEL THICKNESS:

B1 series : 0.8 mm (.031) min. -1.8 mm (.071) max.
B2 series : 1.5 mm (.059) min. -4 mm (.157) max.
B3 series : 3.0±0.25 mm (.118)

TOTAL TRAVEL:

PA S6/S7	1.5 mm(.059)
PA L6	2.5 mm(.098)

OPERATING FORCE: 2N~5N

CONTACT BOUNCE: 10 ms.

MECHANICAL LIFE: 1,000,000 cycles.

TORQUE: 0.5 Nm max.applied to nut,
1.5 Nm max. for metal material.

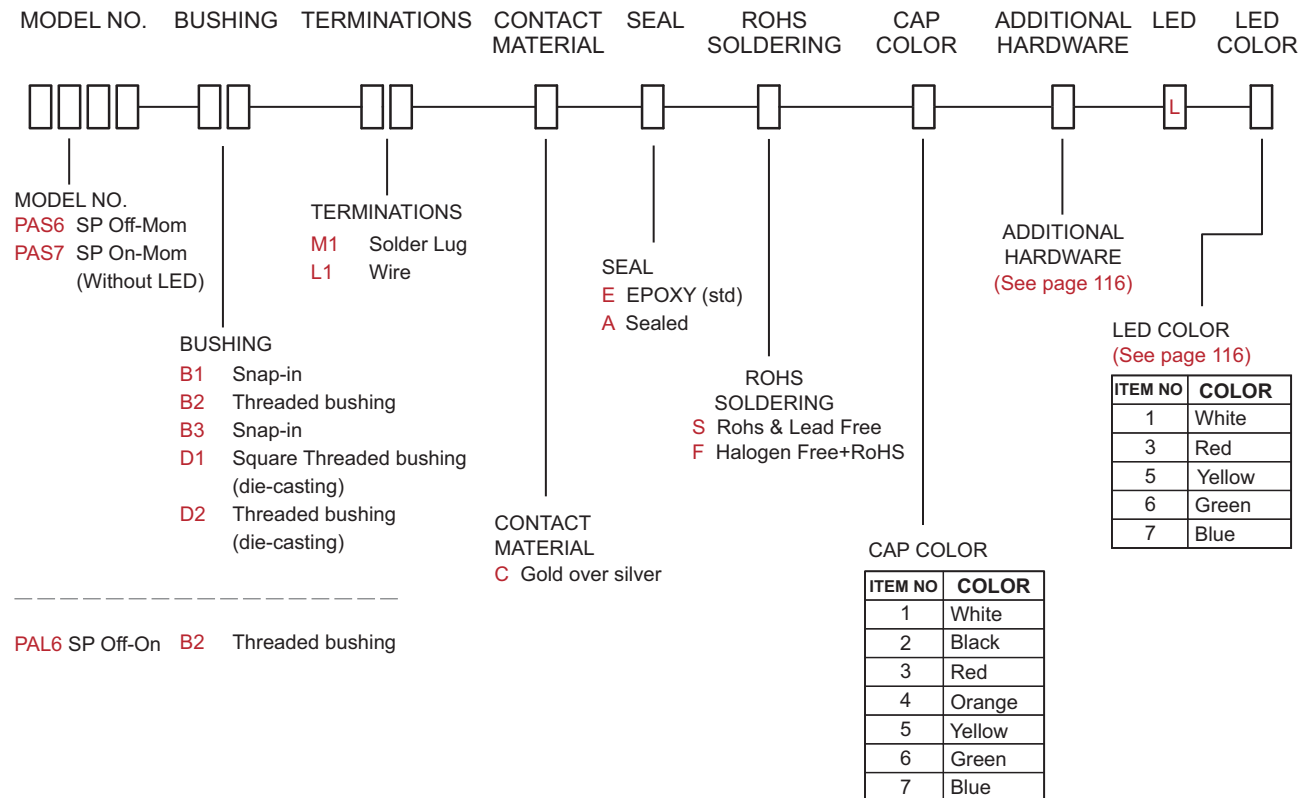
SOLDERING: 350°C max.for 5 seconds.



IP 67
ACCORDING TO
EN 60529:1991(A1-2001)
IEC 60529:2001



HOW TO ORDER



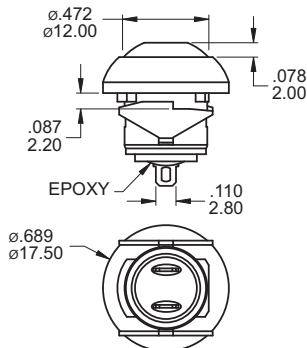
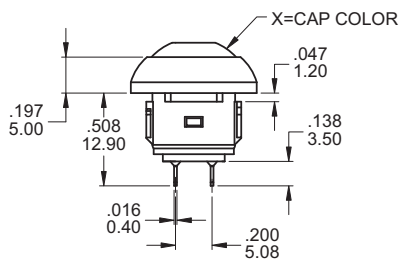
▲ Please kindly note our standard is with flat cap.
If you need round cap, please add "A" before cap color option.

SWITCH FUNCTION

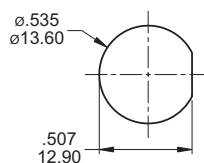
NO. POLES	MODEL NO.	SWITCH FUNCTION		CONNECTED TERMINALS		SCHEMATIC
		POS.1	POS.2	POS.1	POS.2	
SP	PAS6	OFF	MOM	OPEN	1-3	
SP	PAS7	ON	OFF(MOM)	1-3	OPEN	
SP	PAL6	OFF	ON	OPEN	1-3	

MOM=MOMENTARY

B1



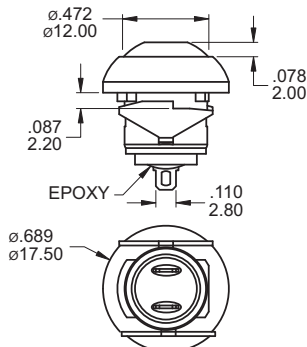
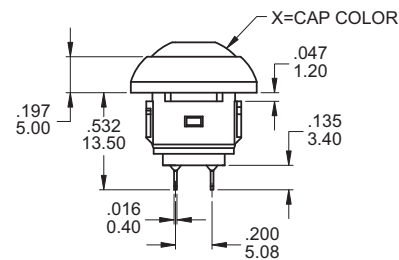
PANEL MOUNTING



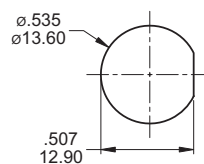
SPDT

Part No. Shown : PAS6B1M1CESX-5

B1



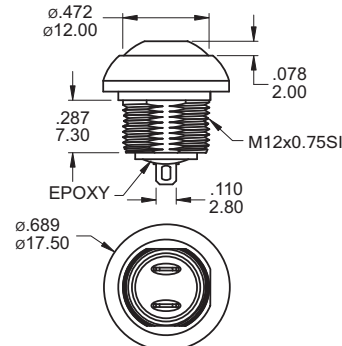
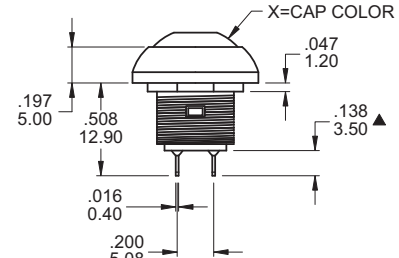
PANEL MOUNTING



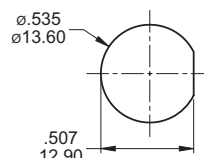
SPDT

Part No. Shown : PAS7B1M1CESX-5

B2



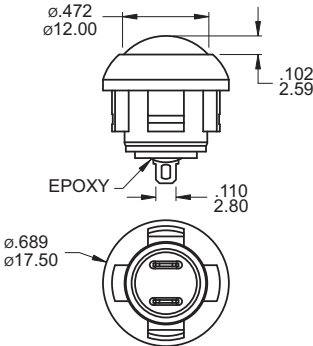
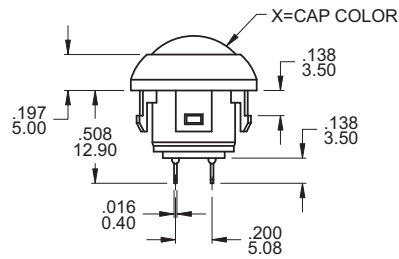
PANEL MOUNTING



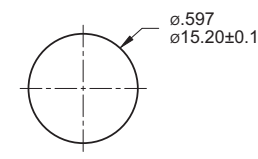
SPDT

Part No. Shown : PAS6B2M1CESX-5

B3

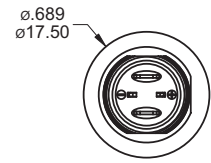
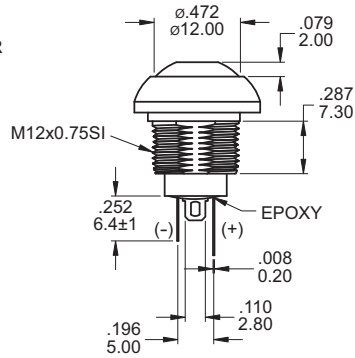
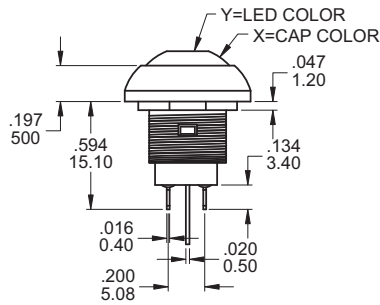


PANEL MOUNTING



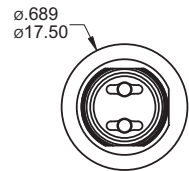
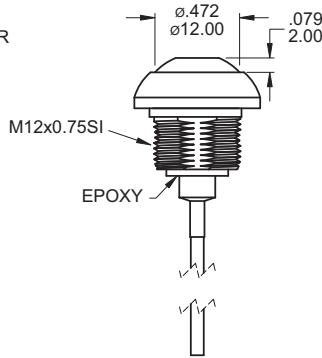
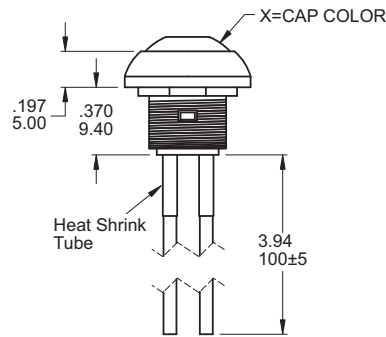
SPDT

Part No. Shown : PAS6B3M1CESAX-5



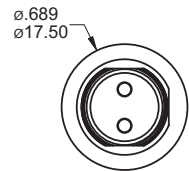
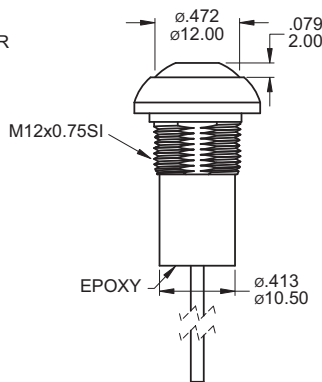
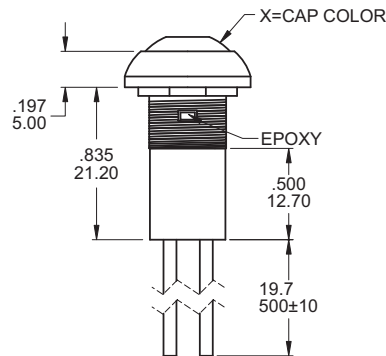
SPDT

Part No. Shown : PAS6B2M1CESX-5LY



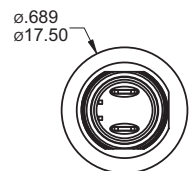
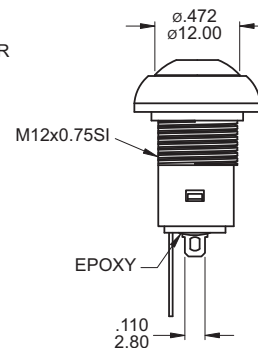
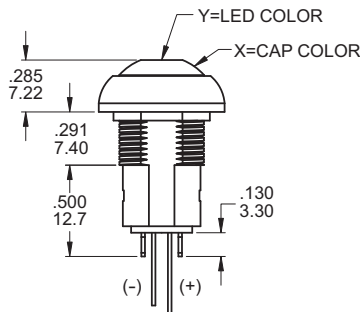
SPDT

Part No. Shown : PAS6B2L3CESX-5



SPDT

Part No. Shown : PAS6B2L1CASX-5



SPDT

Part No. Shown : PAL6B2M1CESX-5LY

BUSHING PLATING



PLATING

- A Chromium
- B Tin-nickel Alloy
- C Stain-chromium
- D Stain-nickel



Chromium



Tin-nickel Alloy



Stain-chromium

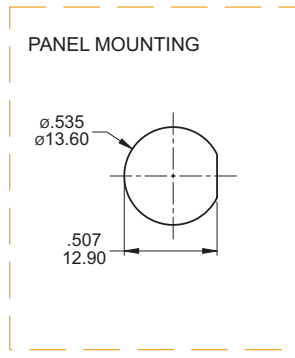
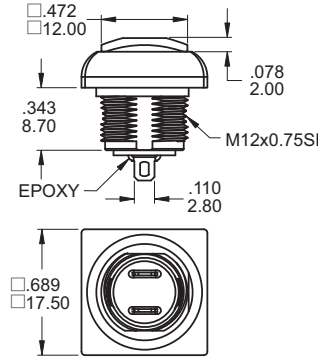
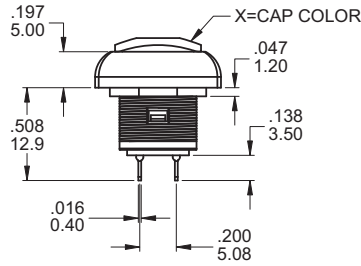


Stain-nickel



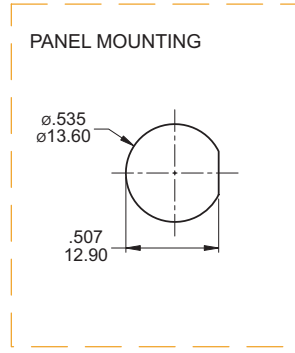
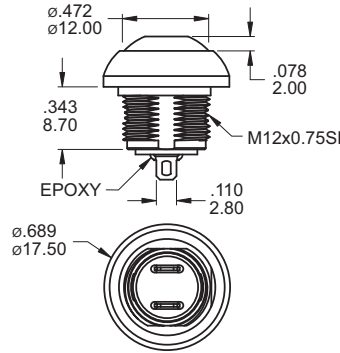
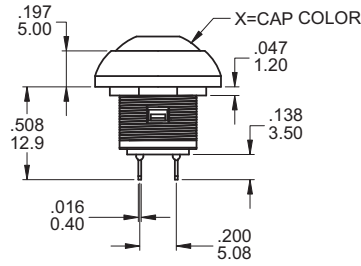
SPDT

Part No. Shown : PAS6D1M1CESX-5



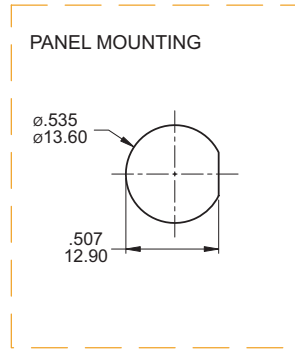
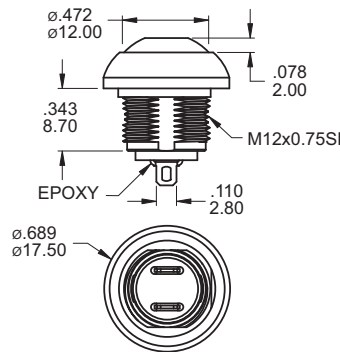
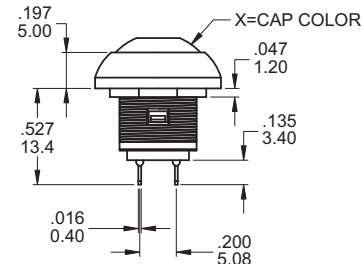
SPDT

Part No. Shown : PAS6D2M1CESX-5



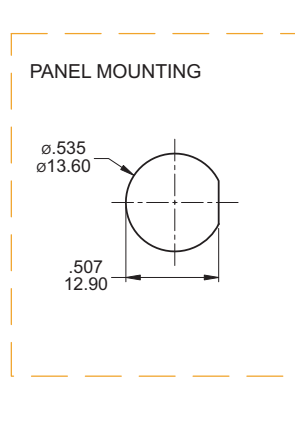
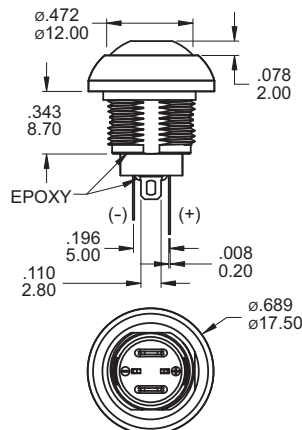
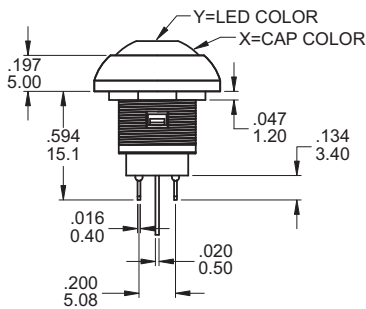
SPDT

Part No. Shown : PAS7D2M1CESX-5



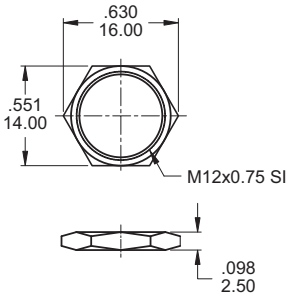
SPDT

Part No. Shown : PAS6D2M1CESX-5LY

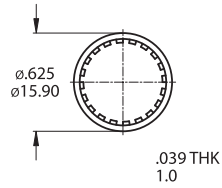


HARDWARE

M12 NUT

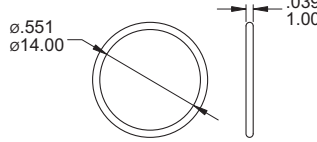


LOCK WASHER HDW12



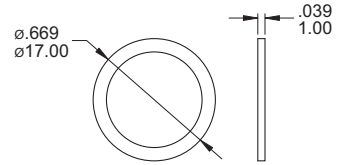
Supplied with B2 / D1 / D2 bushing

O-RING



Supplied with PAL6 and D1 / D2 / B3 options

RUBBER WASHER



Supplied standard with B1 / B2 options

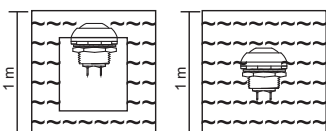
WITH LED ELECTRO-OPTICAL DATA

* The LED specification for reference only

Model No.	Lens Appearance	Color	Electro-optical Data (AT 20mA)				Peak Wavelength	Viewing Angle 2θ 1/2 (deg)	
			Vf (V)		Iv (mcd)				
			Typ.	Max.	Min.	Typ.			
PAS6 & PAS7	Water Clear	White (AT 5mA)	3.2	3.6	94	250	X=0.28 Y=0.29	35°	
		Super Red	1.7	2.6	28	60	660		
		Super Yellow	2.1	2.6	94	200	590		
		Super Green	2.0	2.6	42	100	570		
		Super Blue	3.2	3.6	63	150	470		
		Super Yellow (Super Green)	Y	2.1	2.6	94	200		590
			G	2.0	2.6	42	80		570
		Super Yellow (Super Blue)	Y	2.1	2.6	94	200		590
			B	3.2	3.6	94	200		460
		Super Yellow (Super Red)	Y	2.1	2.6	63	100		590
			R	2	2.6	42	90		630
		Super Red (Super Green)	R	2	2.6	42	90		630
			G	2.0	2.6	42	90		570
		Super Red (Super Blue)	R	2	2.6	42	90		630
	B	3.2	3.6	94	200	460			
	G	2.0	2.6	42	100	570			
	B	3.2	3.6	94	200	460			
PAL6	Water Clear	White	3.3	4	50	250	X=0.31 Y=0.31	90°	
		Super Red	1.95	2.5	70	350	635		
		Super Yellow	2	2.5	70	160	590		
		Super Green	2.1	2.5	18	70	570		
		Super Blue	3.3	4	36	150	470		
		Super Yellow (Super Green)	Y	2	2.5	50	170		590
			G	2.1	2.5	18	50	570	
		Super Yellow (Super Red)	Y	1.95	2.5	70	220	630	170°
			R	2	2.5	50	170	590	
		Super Red (Super Green)	R	1.95	2.5	70	220	630	
			G	2.1	2.5	18	50	570	

IP 67 for the whole series:

Protected against the effects of immersion up to 1 m water(30mn)



SOLDERING PROCESSES

MANUAL SOLDERING : Use soldering iron of 30 watts, controlled at 350°C approximately 5 seconds while applying solder.

WAVE SOLDERING : Recommended Soldering Temperature : 260 ± 5°C
Duration of Solder Immersion : Max 5 sec.
(PCB is 1.6mm in thickness)

SOLDERING : Vapor phase